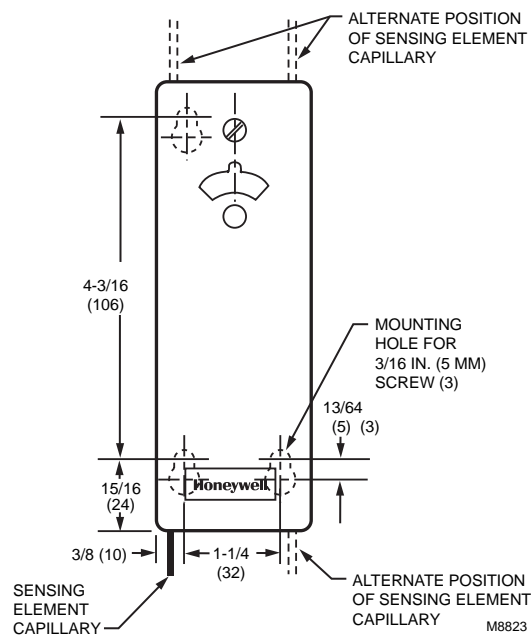


## L4008; L6008 Remote Bulb Controller



Dimensions in inches (millimeters)



Aquastat® Controllers are immersion type devices for limiting or regulating the temperature of liquids in boilers, storage tanks, and other applications where temperature control is required.

- Remote temperature sensing element detects and responds rapidly to temperature changes.
- Totally enclosed Micro Switch™ snap-acting switch.
- Visible control point scale and external adjustment screw permit easy setting.
- Horizontal or vertical mounting of the remote element into boiler, tank, or other container.
- Case mounts to a vertical surface.

**Case Dimensions:** 5 5/8 in. high x 2 in. wide x 2 1/8 in. deep (143 mm high x 51 mm wide x 54 mm deep)

**Maximum Ambient Temperature:** 150 F (66 C)

**Bulb Size:** 3/8 in. x 2 7/8 in. copper (10 mm x 73 mm copper)

### Approvals

**Canadian Standards Association:** Certified: File No. LR95329-1

**Underwriters Laboratories, Inc:** UL Component Recognized: File No. MP466, Vol. 6, Sec.1, Guide No. MBPR2

Product Number	Electrical Ratings		
	(Full Load)	(Locked Rotor)	(Millivolt)
L4008A,B,E L6008A	5.1A @ 240 Vac; 8A @ 120 Vac	30.6A @ 240 Vac; 48A @ 120 Vac	0.25 A @ 0.25 to 12 Vdc

Product Number	Application	Differential Temperature		Capillary Length	Switching Action	Operating Temperature Range		Mounting	Includes
		(F)	(C)			(F)	(C)		
L4008A1015/U	High or Low limit	5 F to 30 F adj.	3 C to 17 C adj.	66 in.	SPST, contacts break on temperature rise.	100 F to 240 F	38 C to 116 C	Horizontal or Vertical	5 1/2 ft (1.7 m) capillary
L4008A1130/U	High or Low limit	5 F to 30 F adj.	3 C to 17 C adj.	120 in.	SPST, contacts break on temperature rise.	130 F to 270 F	54 C to 132 C	Horizontal or Vertical	Stop factory-set at 200 F (93 C) 10 ft (3.04 m) capillary
L4008B1013/U	Circulator	5 F to 30 F adj.	3 C to 17 C adj.	66 in.	SPST, contacts make on temperature rise.	100 F to 240 F	38 C to 116 C	Horizontal or Vertical	5 1/2 ft (1.7 m) capillary
* L4008E1156/U	High Limit; Manual Reset	Manual Reset	Manual Reset	66 in.	SPST, contacts break on temperature rise.	130 F to 270 F	54 C to 132 C	Horizontal or Vertical	5 1/2 ft (1.7 m) capillary; Stop factory-set at 250 F (121 C); Heat-conductive compound
* L4008E1305/U	High Limit; Manual Reset	Manual Reset	Manual Reset	66 in.	SPST, contacts break on temperature rise.	100 F to 240 F	38 C to 116 C	Horizontal or Vertical	Stop factory-set at 240 F (116 C)
L4008E1313/U	High Limit; Manual Reset	Manual Reset	Manual Reset	66 in.	SPST, contacts break on temperature rise.	100 F to 200 F	38 C to 116 C	Horizontal or Vertical	—
* L6008A1192/U	Circulator Control and Low Limit	5 F to 30 F adj.	3 C to 17 C adj.	—	SPDT	100 F to 240 F	38 C to 116 C	Horizontal or Vertical	Stop factory-set at 240 F (116 C) 66 in. capillary
L6008A1242/U	Circulator Control and Low Limit	5 F to 30 F adj.	3 C to 17 C adj.	—	SPDT	100 F to 200 F	38 C to 93 C	Horizontal or Vertical	66 in. capillary

\* TRADELINE models • SUPER TRADELINE models