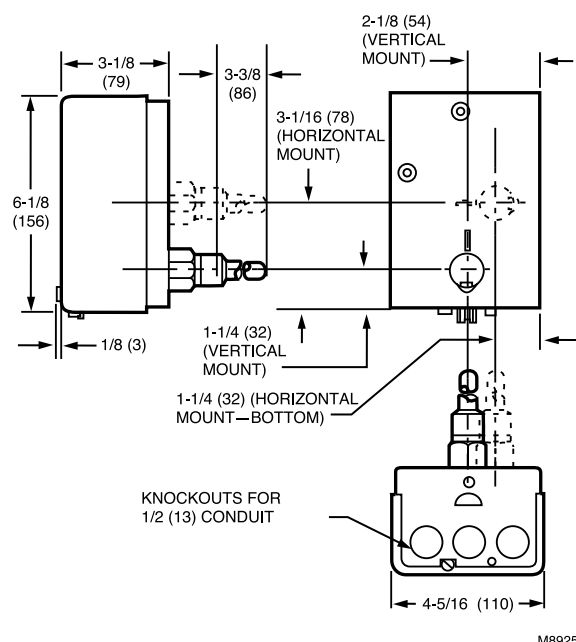


Aquastat Controllers

L8148 Aquastat® Relay



Dimensions in inches (millimeters)



Anticipator Setting: 0.2 A

Voltage: 120 Vac

Frequency: 60 Hz

Electrical Connections: Quick-Connect / Screw

Immersion-type controllers that combine high limit protection with switching relay control of burner and circulator motors.

- High limit opens burner circuit only.
- Include transformer and accessory terminals for adding a remote low limit controller.
- Case available for horizontal or vertical mounting.
- Requires a 24 Vac thermostat with heat anticipator set at 0.2A.
- TRADELINE models include well adapter, tube of heat conductive compound and range stops.

Maximum Ambient Temperature: 150 F with 1.2 A 24 V load; 77 F with 1.4 A 24 V load (66 C with 1.2 A 24 V load; 25 C with 1.4 A 24 V load)

Setpoint Temperature Range: 240 F (116 C)

Operating Range, High Limit: 120 F to 240 F (54 C to 116 C)

Maximum Operating Pressure: Immersion Well: 255 psi (Immersion Well: 1757 kPa)

Operating Humidity Range (% RH): 0 to 95% RH, non-condensing

Capillary Length: 4 1/2 in. (114 mm)

Switching Action: SPST: High Limit & Circulator

Approvals

Canadian Standards Association: Certified: File No. LR1620, Guide No. 400-E-O

Underwriters Laboratories, Inc: UL Listed: File No. MP466, Vol. 13, Sec. 2, Guide No. MBPR2.

Electrical Ratings:

(burner millivolt): 0.25 A @ 1/4 to 12 Vdc

(circulator AFL): 3.7 A @ 240 Vac; 7.4 A @ 120 Vac

(circulator ALR): 22.2 A @ 240 Vac; 44.4 A @ 120 Vac

Product Number	Electrical Ratings			
		(AFL)	(burner AFL)	(burner ALR)
L8148A	—	—	Line Voltage: 7.4 A @ 120 Vac; 3.7 A @ 240 Vac	Line Voltage: 44.4 A @ 120 Vac; 22.7 A @ 240 Vac
L8148E	0.25 A @ 0.25 to 12 Vdc	22.2A @ 240 Vac; 44.4A @ 120 Vac	Low Voltage: 0.8 A max. @ 24 Vac; Line Voltage: 7.4 A @ 120 Vac; 3.7 A @ 240 Vac	Line Voltage: 44.4 A @ 120 Vac; 22.7 A @ 240 Vac
L8148J	—	—	3.7 A @ 240 Vac; 7.4 A @ 120 Vac	22.2 A @ 240 Vac; 44.4 A @ 120 Vac

Product Number	Application	Differential Temperature	Insulation Depth		Mounting	Includes
		(F)	(inch)	(mm)		
* L8148A1017/U	High Limit	8 F fixed	1 1/2 in. to 3 in. less well	38 mm to 76 mm less well	Horizontal	—
* L8148E1265/U	High Limit	15 F fixed	1 1/2 in. to 3 in. less well	38 mm to 76 mm less well	Vertical Mount	Molex® plug for use with vent damper, includes heat-conductive compound. Molex® plug for use with vent damper, includes heat-conductive compound.
L8148E1299/U	High Limit	15 F fixed	1 1/2 in. to 3 in. less well	38 mm to 76 mm less well	Vertical Mount	50 VA transformer and heat conductive compound.
* L8148J1009/U	Aquastat Relay	8 F fixed	1 1/2 in. to 3 in. less well.	38 mm to 76 mm less well	Horizontal or Vertical	—

* TRADELINE models • SUPER TRADELINE models