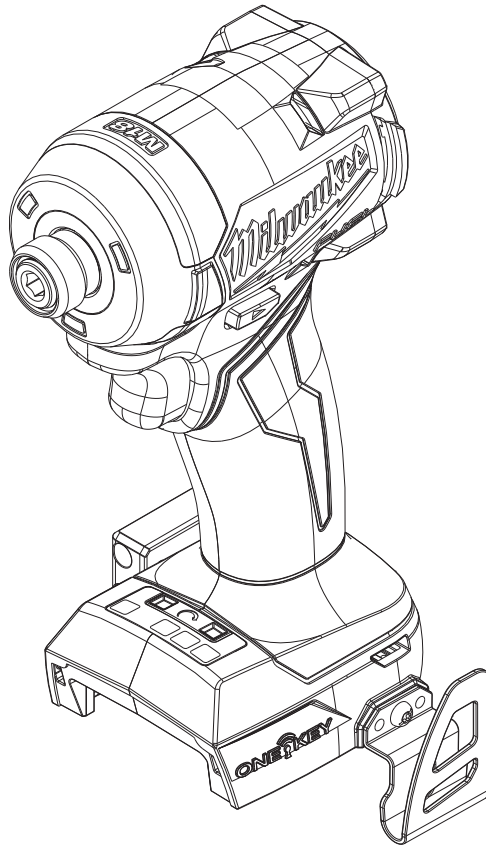




SERVICE PARTS LIST

BULLETIN NO.
54-00-2957

| SPECIFY CATALOG NO. AND SERIAL NO. WHEN ORDERING PARTS | | | REVISED BULLETIN | DATE |
|--------------------------------------------------------|---------|---------------|--------------------|-----------|
| M18 FUEL™ 1/4" HEX IMPACT DRIVER W/ ONE-KEY™ | | | | Feb. 2023 |
| CATALOG NO. | 2957-20 | SERIAL NUMBER | WIRING INSTRUCTION | |
| | | N57A | | |



**Service for Milwaukee Tool Products
can only be performed at a
Milwaukee factory Central Repair Center**

Or

Via e-Service at: www.milwaukeetool.com/e-service
questions, please call 1.800.SAWDUST (1.800.729.3878)

Or

Return it to a MILWAUKEE *factory* Service Center location, freight prepaid and insured.
A copy of the proof of purchase should be included with the return product.

If you have questions please contact Milwaukee Product Service at:

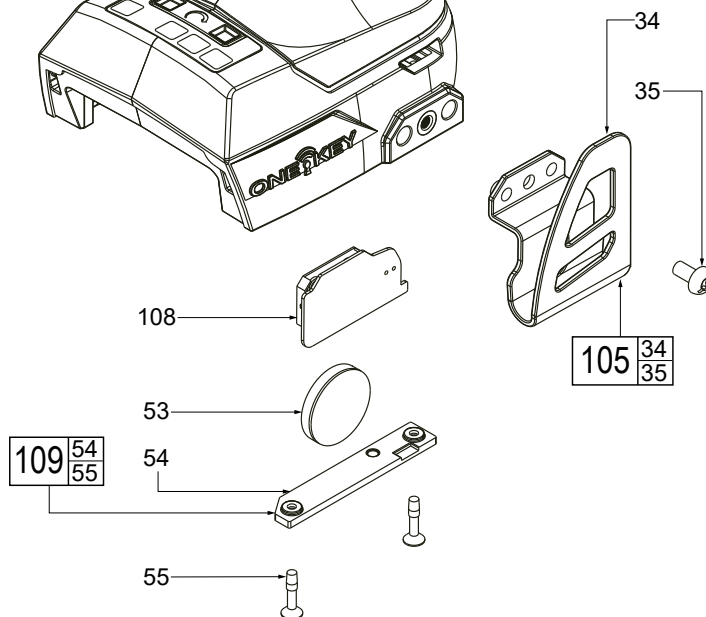
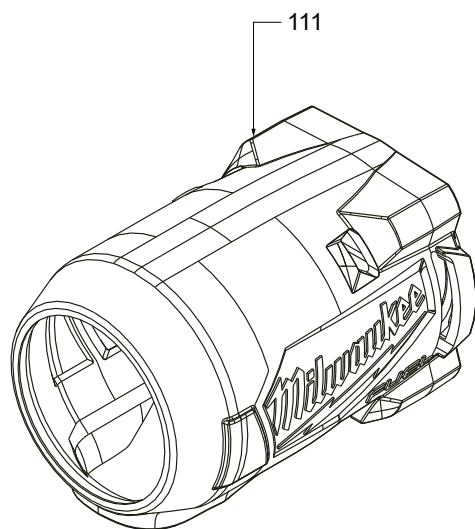
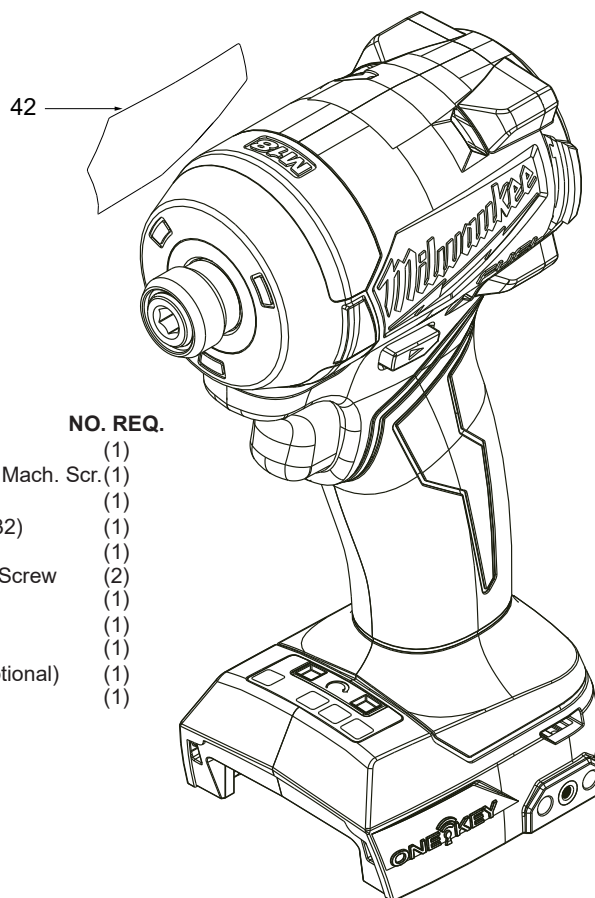
Product Technical Support via phone at: 262.783.8642

Or

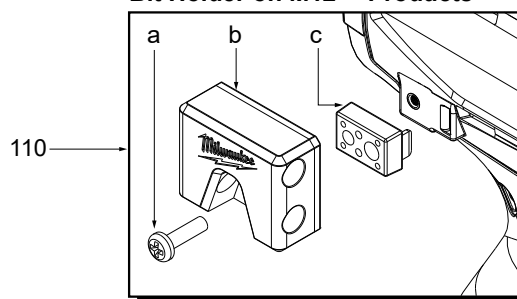
Via email at: METProductSupport@milwaukeetool.com

Disassembly is not recommended and could void the warranty.

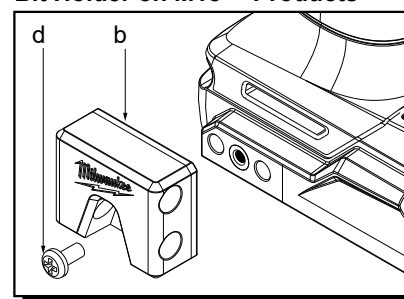
| FIG. | PART NO. | DESCRIPTION OF PART | NO. REQ. |
|------|------------|----------------------------------------|----------|
| 34 | ----- | Belt Clip | (1) |
| 35 | 06-82-2500 | 6-32 x 7mm Pan Hd. Phillips Mach. Scr. | (1) |
| 42 | 12-20-9920 | Service Nameplate | (1) |
| 53 | ----- | 3V Coin Cell Battery (CR 2032) | (1) |
| 54 | ----- | Coin Cell Cover | (1) |
| 55 | ----- | M2.6 x 12mm FH Philips ST Screw | (2) |
| 105 | 42-70-0950 | Belt Clip Service Kit | (1) |
| 108 | 14-20-0068 | Coin Cell Board Assembly | (1) |
| 109 | 45-04-7015 | Coin Cell Cover Assembly | (1) |
| 110 | 49-16-3697 | Bit Holder Kit (Accessory, Optional) | (1) |
| 111 | 49-16-2953 | Rubber Boot (Accessory) | (1) |



Bit Holder on M12™ Products



Bit Holder on M18™ Products



49-16-3697 BIT HOLDER (ACCESSORY)

| FIG. | PART NO. | DESCRIPTION OF PART |
|------|------------|-------------------------------------------------------|
| a | 06-82-3008 | 6-32 x 12.7mm Pan Hd. Phillips Screw (For M12™ Tools) |
| b | ----- | Bit Holder |
| c | ----- | Adapter (For M12™ Tools) |
| d | 06-82-2500 | 6-32 x 7mm Pan Hd. Phillips Screw (For M18™ Tools) |