



# SERVICE PARTS LIST

**BULLETIN NO.**  
**54-26-2850**

SPECIFY CATALOG NO. AND SERIAL NO. WHEN ORDERING PARTS		REVISED BULLETIN	DATE
<b>M18™ FUEL™ ONE KEY™ 3/4" Square Impact Wrench</b>			May 2019
<b>CATALOG NO.</b>	<b>2864-20</b>	<b>WIRING INSTRUCTION</b>	
	<b>STARTING SERIAL NO.</b>	<b>See Pages 2 and 3</b>	
	<b>J40A</b>		

FIG.	PART NO.	DESCRIPTION OF PART	NO. REQ.
1	05-81-0002	M5 x 40mm Pan Hd. ST T-20 Screw	(4)
7	02-02-0251	6.6mm Steel Ball	(1)
9	02-02-2050	3/16" Steel Ball	(28)
10	45-88-2015	Washer	(1)
11	40-50-1925	Spring	(1)
14	44-60-1960	Planet Gear Pin	(3)
15	45-88-2020	Washer	(1)
16	02-04-0375	Ball Bearing	(1)
17	43-44-0011	Gasket	(1)

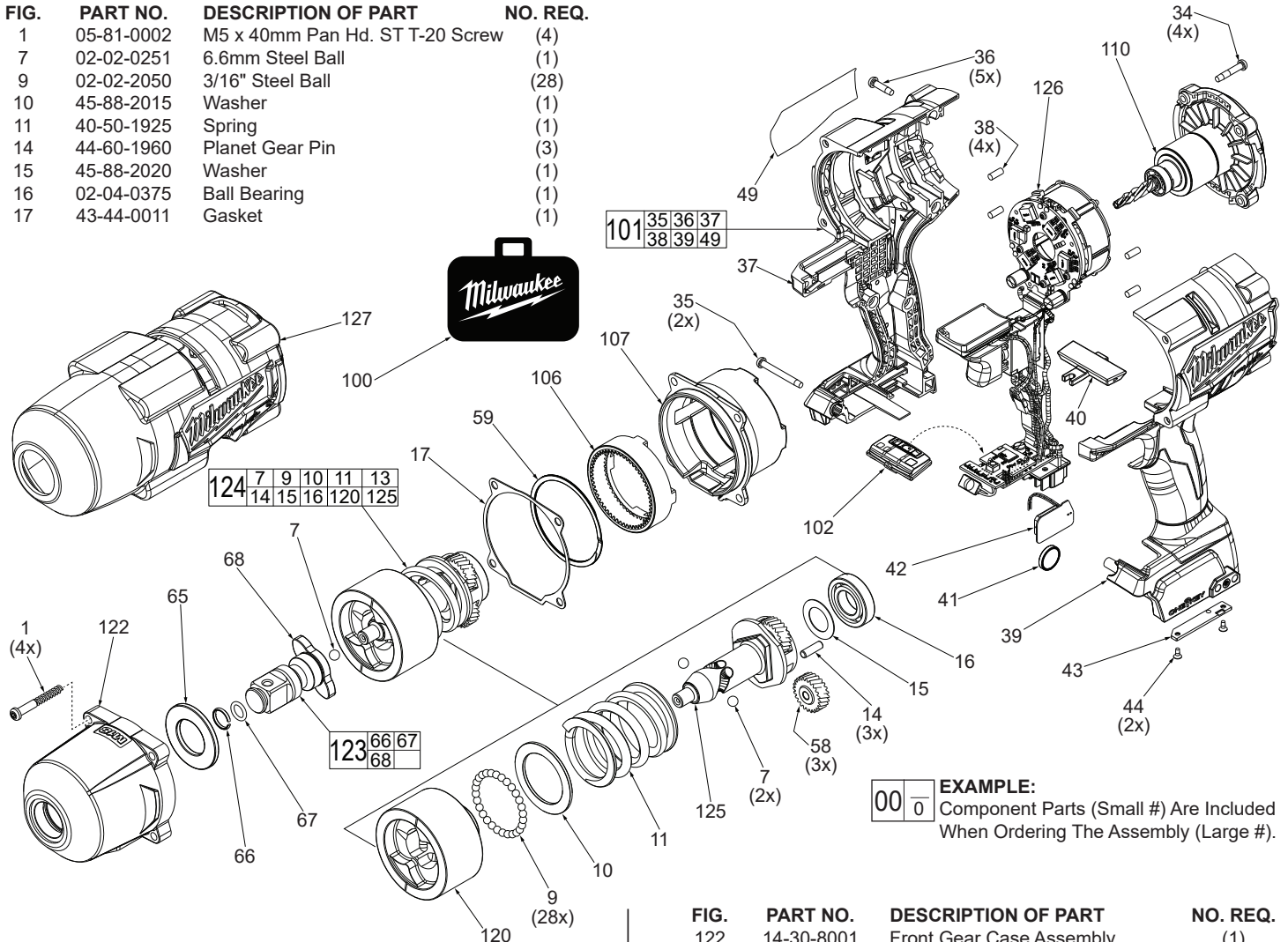


FIG.	PART NO.	DESCRIPTION OF PART	NO. REQ.
34	06-82-4001	M4 x 22mm Pan Hd. ST T-20 Screw	(4)
35	06-82-4002	M4 x 35mm Pan Hd. ST T-20 Screw	(2)
36	06-82-4003	M4 x 16mm Pan Hd. ST T-20 Screw	(5)
37	-----	Right Housing Halve - Cover	(1)
38	45-30-0255	Rubber Slug	(4)
39	-----	Left Housing Halve - Support	(1)
40	45-24-0022	Forward/Reverse Shuttle	(1)
41	-----	3V Coin Cell Battery (CR 2032)	(1)
42	22-09-2757	Coin Cell Board Assembly	(1)
43	31-15-0011	Coin Cell Cover	(1)
44	05-81-1100	M2.6 x 6mm ST Phillips Screw	(2)
49	12-20-2810	Service Nameplate	(1)
58	32-62-0500	Planet Gear	(3)
59	34-40-0052	Retaining Ring	(1)
65	45-88-4001	Front Case Washer	(1)
66	44-90-4540	C-Ring	(1)
67	34-40-1210	O-Ring	(1)
68	-----	3/4" Square Drive Anvil	(1)
100	42-55-0063	Blow Molded Carrying Case	(1)
101	31-44-0053	Housing Assembly	(1)
102	45-24-0061	Speed Selector Assembly	(1)
106	32-65-0025	Ring Gear	(1)
107	44-66-0004	Rear Gear Case	(1)
110	16-01-0400	Rotor/End Cap Assembly	(1)
120	43-81-0310	Hammer	(1)

FIG.	PART NO.	DESCRIPTION OF PART	NO. REQ.
122	14-30-8001	Front Gear Case Assembly	(1)
123	42-06-9001	3/4" Square Drive Anvil Assembly	(1)
124	14-46-3001	Gear Box Assembly	(1)
125	36-10-1011	Camshaft	(1)
126	14-20-4001	Electronics Assembly	(1)
127	49-16-2864	Rubber Boot, Accessory	(1)

### LUBRICATION

Use Type 'J' Grease, No. 49-08-4220 (1 lb. can)

*NOTE:* Service grease may not be compatible with grease used during manufacturing. 90-95% of the old grease must be removed prior to any new grease being added. *See grease application to gear and hammering mechanism on page two.*

SCREW TORQUE SPECIFICATIONS				
FIG.	PART NO.	WHERE USED	SEAT TORQUE	
			(KG/CM)	(IN/LBS)
1	06-82-4000	Front Gear Case	36±3	31±2
34	06-82-4004	Rotor/End Cap Assy.	16±2	14±1
35	06-82-4002	Right Housing Halve	16±2	14±1
36	06-82-4003	Right Housing Halve	16±2	14±1
44	05-81-1100	Coin Cell Cover	2.5-3.5	2-3