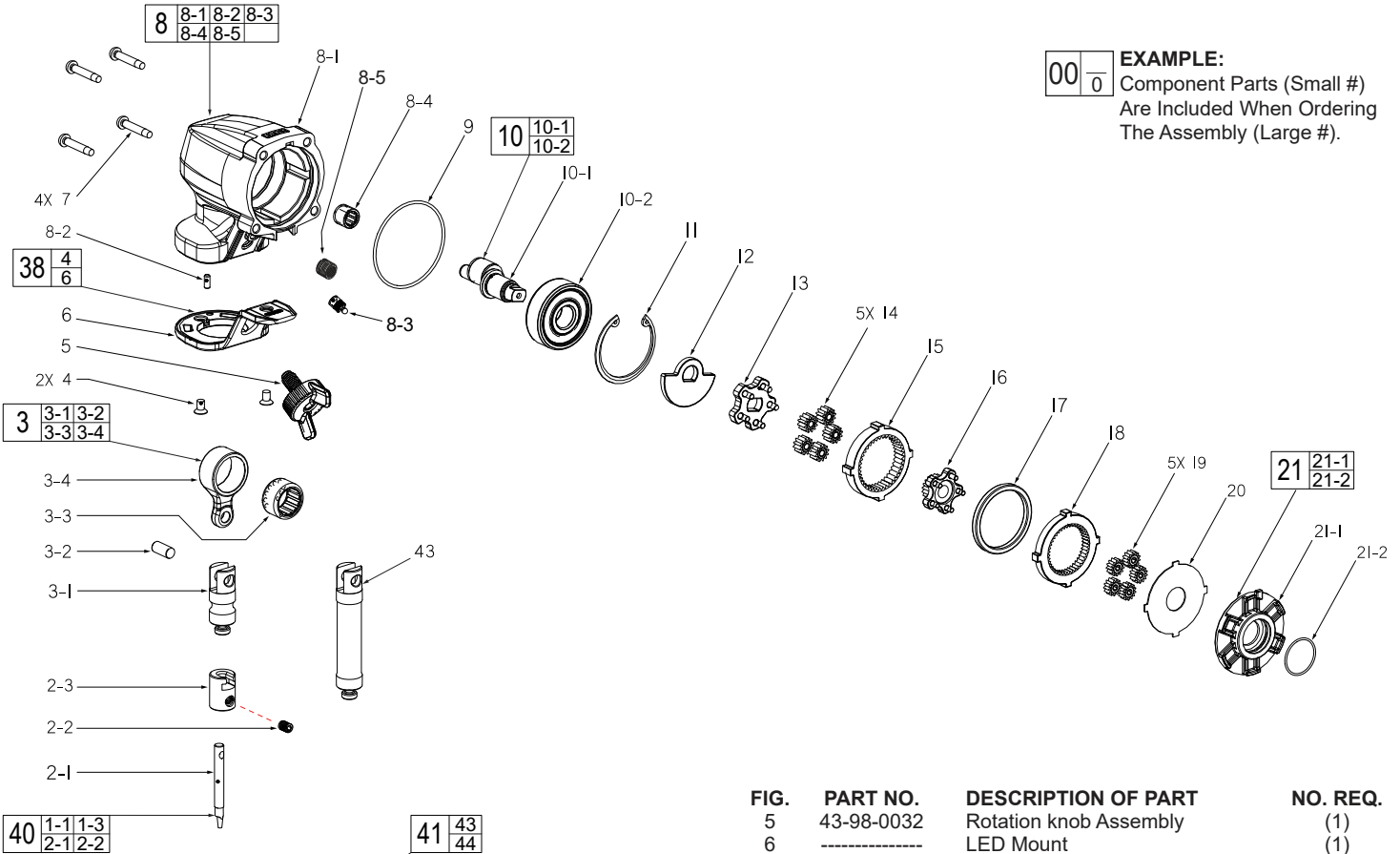




SERVICE PARTS LIST

BULLETIN NO.
54-27-0025

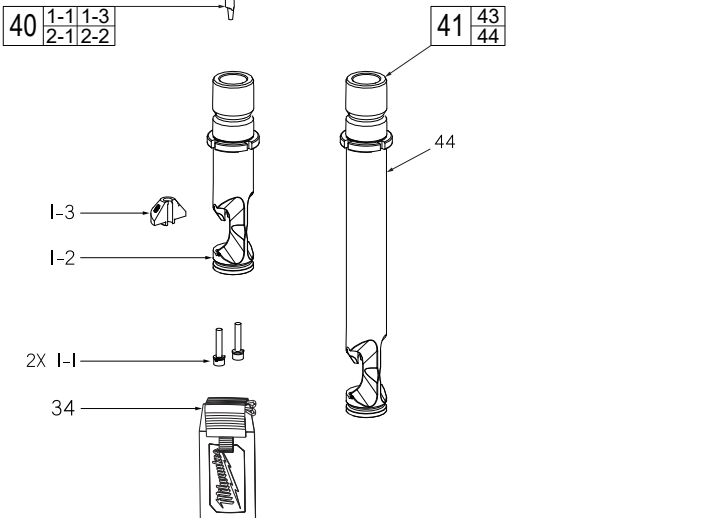
| | | | |
|---|---------------------------------|-------------------------------------|-----------|
| SPECIFY CATALOG NO. AND SERIAL NO. WHEN ORDERING PARTS | | REVISED BULLETIN | DATE |
| M12™ FUEL™ 16 GAUGE NIBBLER | | | Sep. 2022 |
| CATALOG NO. 2476-20 | STARTING SERIAL NO. M49A | WIRING INSTRUCTION Page 3 | |



EXAMPLE:

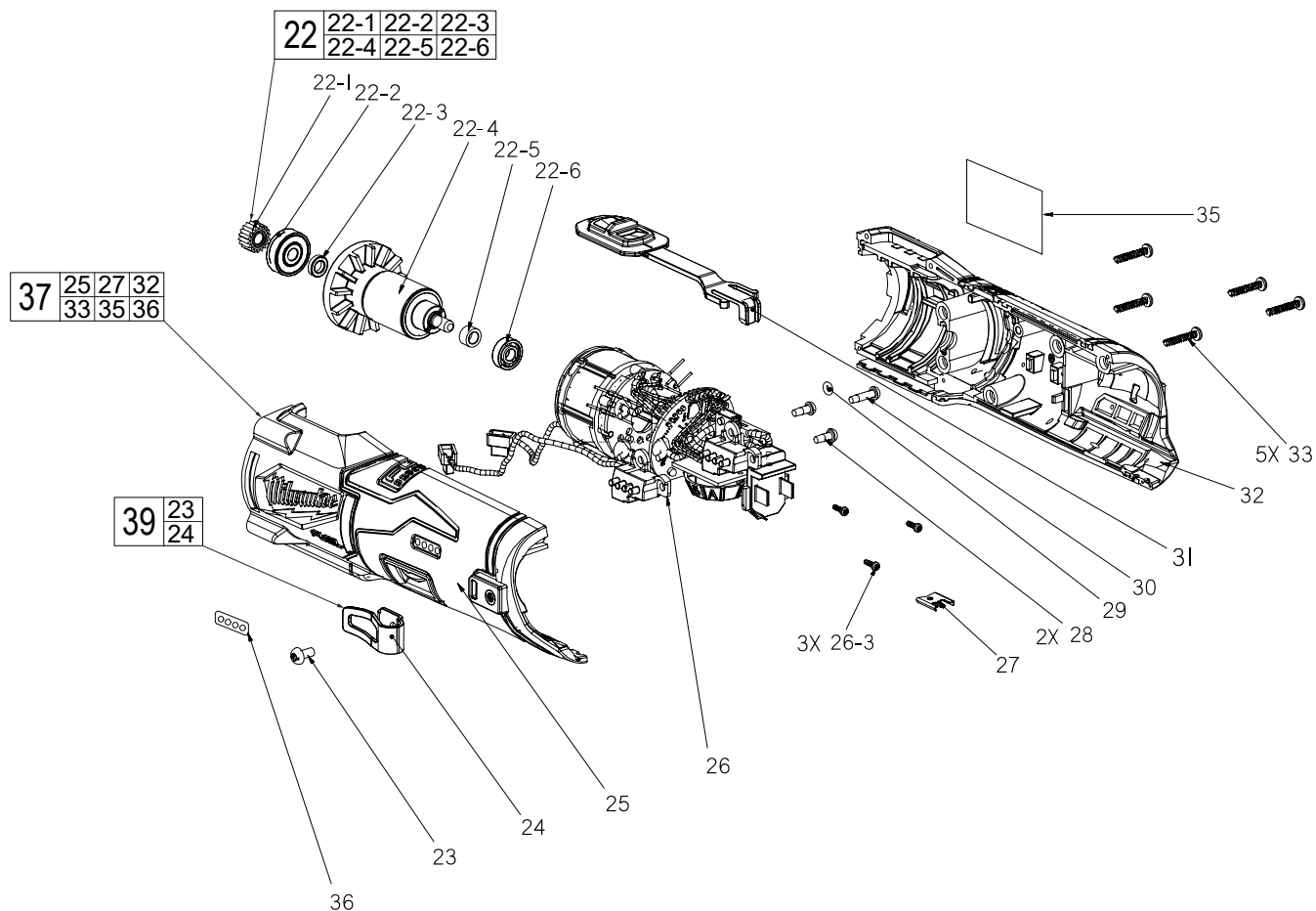
| | |
|----|---|
| 00 | 0 |
|----|---|

 Component Parts (Small #)
 Are Included When Ordering
 The Assembly (Large #).



| FIG. | PART NO. | DESCRIPTION OF PART | NO. REQ. |
|------|------------|---------------------------|----------|
| 5 | 43-98-0032 | Rotation knob Assembly | (1) |
| 6 | ----- | LED Mount | (1) |
| 7 | 05-88-1255 | M4 x 22mm ST Screw | (4) |
| 8 | 14-30-0089 | Gear Box Assembly | (1) |
| 8-1 | ----- | Gear Case | (1) |
| 8-2 | ----- | Pin | (1) |
| 8-3 | ----- | Guide Pin | (1) |
| 8-4 | ----- | Needle Bearing | (1) |
| 8-5 | 43-84-0027 | Threaded Insert | (1) |
| 9 | 34-40-0330 | O-Ring | (1) |
| 10 | 14-73-2476 | Cam Shaft Assembly | (1) |
| 10-1 | 45-08-0045 | Eccentric Shaft | (1) |
| 10-2 | 02-04-0037 | Ball Bearing | (1) |
| 11 | 44-90-0405 | Retaining Ring | (1) |
| 12 | 42-88-0058 | Counter Weight | (1) |
| 13 | 42-46-0011 | 2nd Carrier | (1) |
| 14 | 32-62-0105 | 2nd Planet Gear | (5) |
| 15 | 32-65-0220 | 2nd Ring Gear | (1) |
| 16 | 33-40-1000 | 2nd Layer Sun Gear | (1) |
| 17 | 31-86-0040 | Spacer | (1) |
| 18 | 32-65-0006 | 1st Ring Gear | (1) |
| 19 | 32-62-0103 | 1st Layer Planet Gear | (5) |
| 20 | 45-88-0127 | Flat Washer | (1) |
| 21 | 14-46-0322 | Diecast Motor Holder Kit | (1) |
| 21-1 | ----- | Motor Holder | (1) |
| 21-2 | 34-40-0147 | O-Ring | (1) |
| 34 | 42-16-2476 | Chip Collection Bag | (1) |
| 38 | 14-46-2477 | LED Mount Kit | (1) |
| 40 | 48-44-0272 | Punch and Die Accessory | (1) |
| 41 | 49-72-0152 | Long Die Holder Accessory | (1) |
| 43 | ----- | Long Piston | (1) |
| 44 | ----- | Long Die Holder | (1) |

| FIG. | PART NO. | DESCRIPTION OF PART | NO. REQ. |
|------|------------|---------------------------|----------|
| 1-1 | 06-97-3610 | M3.0 x 0.5 CH Mach. Screw | (2) |
| 1-2 | 43-72-0151 | Die Holder Assembly | (1) |
| 1-3 | ----- | Die | (1) |
| 2-1 | ----- | Punch | (1) |
| 2-2 | 06-83-0020 | M5 x 0.8 Mach. Screw | (1) |
| 2-3 | 43-72-0009 | Punch Holder | (1) |
| 3 | 14-48-0070 | Rod Assembly | (1) |
| 3-1 | ----- | Steel Piston | (1) |
| 3-2 | ----- | Pin | (1) |
| 3-3 | ----- | Needle Bearing | (1) |
| 3-4 | ----- | Conrod | (1) |
| 4 | 05-81-0592 | M4 x 0.7 Mach. Screw | (2) |



| FIG. | PART NO. | DESCRIPTION OF PART | NO. REQ. |
|------|------------|---------------------------|----------|
| 22 | 14-50-0027 | Motor Rotor Assembly | (1) |
| 22-1 | ----- | Motor Pinion | (1) |
| 22-2 | ----- | Ball Bearing | (1) |
| 22-3 | ----- | Copper Sleeve | (1) |
| 22-4 | ----- | Motor Armature | (1) |
| 22-5 | ----- | Drive Sleeve | (1) |
| 22-6 | ----- | Ball Bearing | (1) |
| 23 | ----- | #6-32 PH Torq Screw | (1) |
| 24 | ----- | Belt Clip | (1) |
| 25 | ----- | Housing Support | (1) |
| 26 | 14-20-2476 | PCBA and Motor Assembly | (1) |
| 26-3 | ----- | M2 x 0.89 PH Screw | (3) |
| 27 | 42-70-0058 | Housing Connection Clip | (1) |
| 28 | 06-82-0062 | M3 x 8mm T-10 Screw | (2) |
| 29 | 34-40-0089 | O-Ring for Trigger Switch | (1) |
| 30 | 06-82-1087 | M3 x 1.058 ST Screw | (1) |
| 31 | 31-92-0052 | Slide Switch Button | (1) |
| 32 | ----- | Housing Cover | (1) |
| 33 | 06-82-7210 | M3 x 1.05 CH Screw | (5) |
| 35 | 12-20-2489 | Service Nameplate | (1) |
| 36 | ----- | Fuel Gauge Label | (1) |
| 37 | 14-34-2476 | Housing Kit | (1) |
| 39 | 14-46-2476 | Belt Clip Kit | (1) |

FIG. NOTES
 35,36 A clean, dry surface is essential for proper performance for any adhesive system. The area intended for application of any adhesive label or nameplate must be prepared by cleaning with isopropyl alcohol. The solvent is to be applied with a clean, lint free applicator and the surface allowed to dry before applying the label or nameplate.

| SCREW TORQUE SPECIFICATIONS | | | SEAT TORQUE | |
|-----------------------------|------------|-----------------|-------------|----------|
| FIG. | PART NO. | WHERE USED | (KG/CM) | (IN/LBS) |
| 1-1 | 06-97-3610 | Die Holder | 6 | 5 |
| 2-2 | 06-83-0020 | Punch Holder | 13 | 11 |
| 4 | 05-81-0592 | Gear Case | 7 | 6 |
| 5 | 43-98-0032 | Gear Case | 12 | 10 |
| 7 | 05-88-1255 | Housing Support | 8 | 7 |
| 7 | 05-88-1255 | Housing Cover | 8 | 7 |
| 23 | ----- | Housing Support | 4.5 | 3.9 |
| 28 | 06-82-0062 | PCBA | 3 | 2.6 |
| 30 | 06-82-1087 | PCBA | 2 | 1.7 |
| 33 | 06-82-7210 | Housing Cover | 4 | 3 |



Insert white in trap before Black wire.



Visually check that Blue wire is free from Rotor.



Wrap red wire as shown to avoid interference with slide button.



Place red, blue, and black wire in corresponding wire traps.



Place FUEL gauge wire into wire trap.



Place white and black wire in corresponding wire traps.

Lubrication

