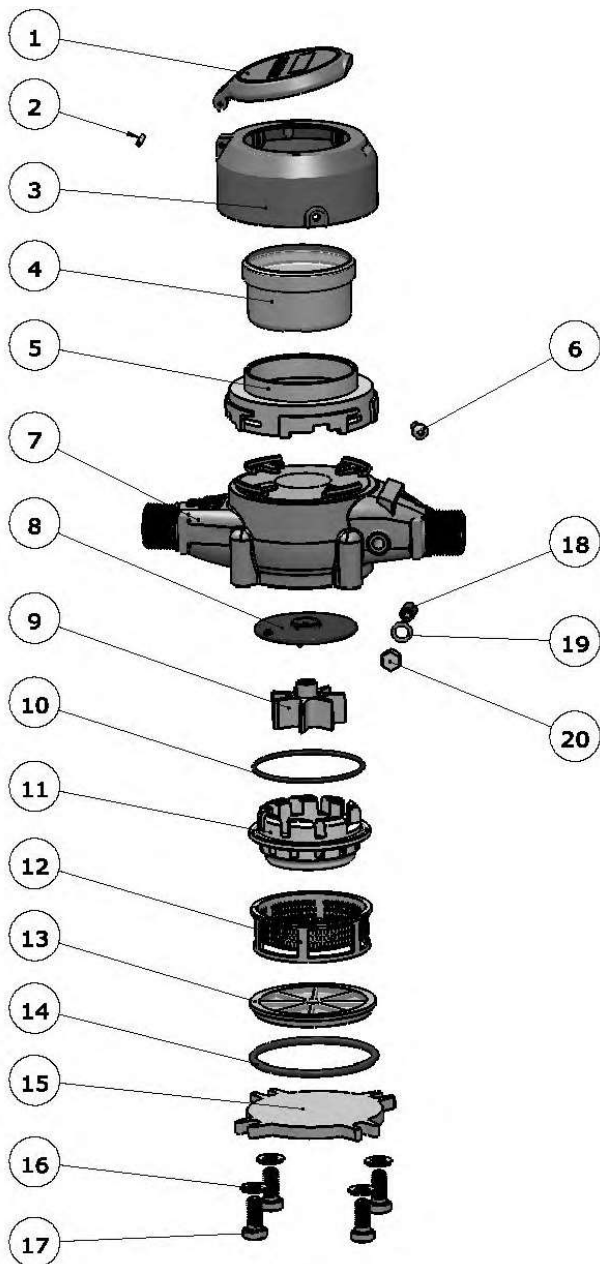


ZENNER Nitro I Multi-jet Type Cold Water Meters

Parts List for Models PMN01 and PMN02 (Newer MTK Version)

Sizes: 5/8X1/2, 5/8X3/4



ITEM	PART NUMBER	DESCRIPTION	QTY
1-B	PM-RCVR-XB	Register Cover, Brass	1
1-P	ZM-RCVR-XP	Register Cover, Plastic	1
1-BE	ZM-RCVR-EB	Register Cover, Brass, ETRU	1
1-PE	136697	Register Cover, Plastic, ETRU	1
2-B	PINDOBR-098-100	Register Cover Hinge Pin (for brass)	1
2-P	ZM-RCVR-PIN	Register Cover Hinge Pin (for plastic)	1
3-B	ZM-SHR-B	Register Shroud, Brass	1
3-P	ZM-SHR-P	Register Shroud, Plastic	1
4-CF	MTK02-REG-CF	Register, 5/8" PMN, Cubic Feet	1
4-CM	MTK02-REG-CM	Register, 5/8" PMN, Cubic Meters	1
4-US	MTK02-REG-US	Register, 5/8" PMN, U.S. Gallons	1
5	MTK-RR-SHR	Shroud Retaining Ring	1
6	.05C12CPSS-T	Tamper Screw Skt Pan M5-0.8 X 12	1
7-01B	MTK01B-HSG	Housing, 5/8 X 1/2, with Bypass	1
7-02B	MTK02B-HSG	Housing, 5/8 X 3/4, with Bypass	1
8 - 14	MTK02-CHA	Chamber Assembly Complete, 5/8" (Items 8 thru 14)	1
9	MTK02-IMP	Impeller Assembly	1
10	OPMN-63-E7015	O-Ring 63X2 EPDM (Chamber Seal)	1
11	MTK02-IMPH	Impeller Housing Assembly, 5/8"	1
12	MTK02-STR	Strainer	1
13	MTK02-SEAL-RT	Seal Retainer	1
14	OPMN-68-E7015	O-Ring 68X3.5 EPDM (Bottom Plate Seal)	1
15-B	MTK02-BPL-B	Bottom Plate, Brass	1
15-C	MTK02-BPL-C	Bottom Plate, Cast Iron	1
16	31N62WSHS	Washer Flat SS 5/16 x 5/8	4
17	31C75HCSS	Bolt Hex Cap SS 5/16-18 x .75	2
17-DH	31C75HCSS-DH	Bolt Hex Cap SS 5/16-18 x .75, DH	2
18	152887	Screw, Regulating, M8x1x11.7	1
19	110487	Washer M8	1
20	136400	Bolt, Hex, SS, M8, Drilled Hole	1